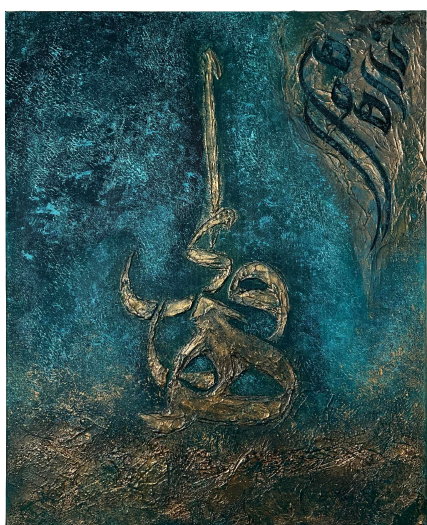




The Shape of Meaning

Jabra Mitwasi
1 April – 30 April



The Shape of Meaning explores the emotional and cultural weight of language through contemporary Arabic calligraphy. Palestinian artist **Jabra Mitwasi's** work blends traditional scripts with abstraction, color, and texture, creating paintings and mixed media pieces that speak across borders and identities. Mitwasi's practice, rooted in memory and presence, uses script as both a visual element and a vessel for heritage, identity, and preservation.

The exhibition invites viewers to engage with language beyond its literal meaning, deconstructing and reassembling words into new forms. Some works retain the fluidity of Arabic letters, while others dissolve into meditative marks, echoing spiritual iconography and layered cultural memory. Themes of displacement,

belonging, and resilience emerge throughout.

Rooted in both Eastern and Western traditions, the exhibition reflects Mitwasi's ongoing journey as an artist and cultural practitioner. It also offers an invitation to connect across languages, disciplines, and lived experiences. *The Shape of Meaning* is born from recent residencies at local artist studios and the **Tett Centre**, continuing the exploration of calligraphy as a timeless form of expression.

The exhibition also bridges the analog and digital by integrating augmented reality into one painting, deepening the viewer's connection with the work through motion, sound, and interactivity.



About the Artist

Jabra Mitwasi is a Palestinian visual artist and designer whose work bridges heritage and contemporary expression. Trained in traditional Arabic calligraphy and design, Mitwasi's practice explores the expressive potential of letterforms in today's visual discourse. His career spans over two decades of teaching, design, and artistic production, beginning in Bethlehem with a deep interest in calligraphy, sacred art, and community-led design.

Mitwasi holds a **Master of Arts in Design** (with distinction) from the **University of Sunderland, UK**. His work includes acrylic painting, video installation, sculpture, and icon painting in Byzantine and Jerusalem traditions. Now based in Kingston, Ontario, he continues to push the boundaries of Arabic calligraphy through abstraction and modern design sensibilities.

Mitwasi brings a distinct visual voice shaped by his lived experience in Palestine and his immersion in both Eastern and Western artistic traditions. His work often responds to themes of identity, spirituality, language, and place, creating space for cultural narratives that are often marginalized or misunderstood. His work was featured in **Martello Alley's Froid'Art** and he was an artist-in-residence at the **Tett Centre for Creativity and Learning** in 2025.

Wall Text

The Shape of Meaning explores the emotional and cultural weight of language through contemporary Arabic calligraphy. Palestinian artist Jabra Mitwasi blends traditional scripts with abstraction, color, and texture, creating works that transcend borders and identities. Rooted in memory and presence, his practice uses script as both a visual element and a vessel for heritage, identity, and preservation.

The exhibition invites viewers to engage with language beyond its literal meaning, transforming words into new forms. Some works retain the fluidity of Arabic letters, while others dissolve into meditative marks, echoing spiritual iconography and cultural memory. Themes of displacement, belonging, and resilience emerge throughout.

Ultimately, this exhibition is a visual meditation on belonging and the resilience of language. It asks how meaning can be shaped, not just through words, but through form, material, and presence. It is a celebration of identity through reinvention.

About Jabra

Jabra Mitwasi is a Palestinian visual artist and designer whose work bridges heritage and contemporary expression. Trained in traditional Arabic calligraphy and design, Mitwasi's practice explores the expressive potential of letterforms in today's visual discourse. His career spans over two decades of teaching, design, and artistic production, beginning in Bethlehem with a deep interest in calligraphy, sacred art, and community-led design.

Mitwasi holds a **Master of Arts in Design** (with distinction) from the **University of Sunderland, UK**. His work includes acrylic painting, video installation, sculpture, and icon painting in Byzantine and Jerusalem traditions. Now based in Kingston, Ontario, he continues to push the boundaries of Arabic calligraphy through abstraction and modern design sensibilities.

Facebook/Instagram Text

✨ Now on view: The Shape of Meaning by Jabra Mitwasi ✨

Explore the emotional and cultural weight of language through contemporary Arabic calligraphy. Palestinian artist Jabra Mitwasi (@jabraartstudio) blends traditional scripts with abstraction, color, and texture, creating works that transcend borders and identities.

The Shape of Meaning is an act of cultural continuity. Mitwasi treats calligraphy not only as an inherited aesthetic, but as an evolving medium capable of engaging new audiences and platforms.

📱 For the first time, Mitwasi is integrating an augmented reality layer into one of the works; introducing a digital dimension that invites deeper interaction, movement, and sound.

The exhibition invites viewers to engage with language beyond its literal meaning, deconstructing and reassembling words into new forms. It asks how meaning can be shaped, not just through words, but through form, material, and presence. It is a celebration of identity through reinvention.

📅 2 April – 30 April, 2025

📍 Tett Centre - Unit 115, 370 King St W.

🌐 JabraMitwasi.com

👤 About the Artist

Jabra Mitwasi is a Palestinian visual artist and designer whose work bridges heritage and contemporary expression. Trained in traditional Arabic calligraphy and design, Mitwasi's practice explores the expressive potential of letterforms in today's visual discourse. His career spans over two decades of teaching, design, and artistic production, beginning in Bethlehem with a deep interest in calligraphy, sacred art, and community-led design.

#ArabicCalligraphy #JabraMitwasi #ContemporaryArt #KingstonArt #KingstonArtsCouncil #YGKArt #YGKARTIST #YGK #OntarioArt